

**Friday January 2, 2009 10:00 AM EST**

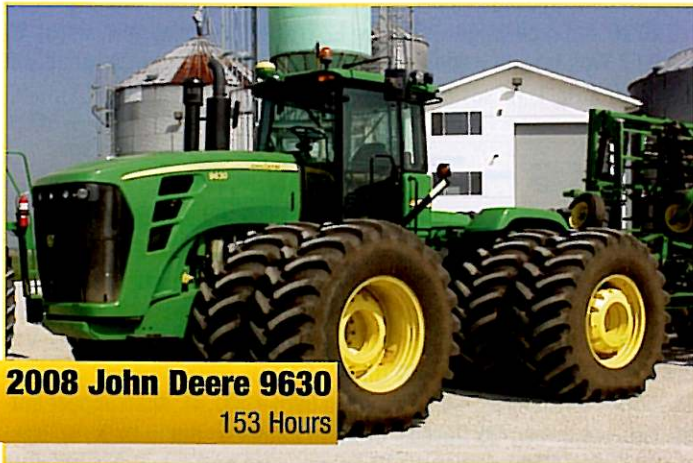
**AUCTION NOTE:**

Irene Corp has sold or rented their crop land and is selling their farm equipment. This could be the finest offering of late model, low hour, hard-to-find, quality equipment that has ever been sold at public auction.

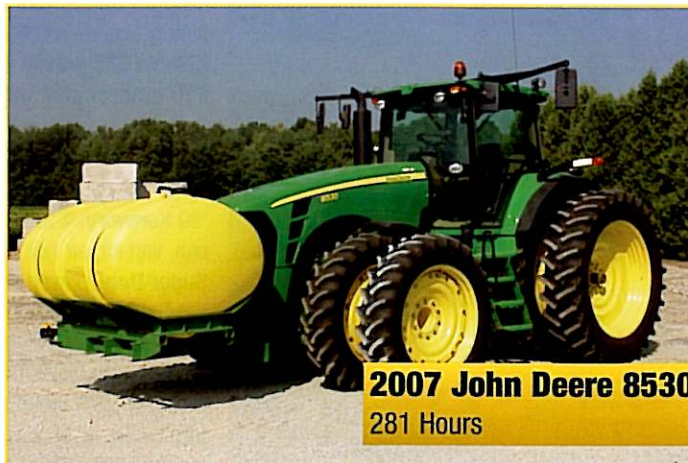
Major pieces were bought new by Irene Corp. and all equipment has had excellent maintenance.

**SALE ORDER:**

Misc (15 min.), small trailers, ATV's, vehicles, trailers, tractors, implements, combines, followed by grain handling equipment



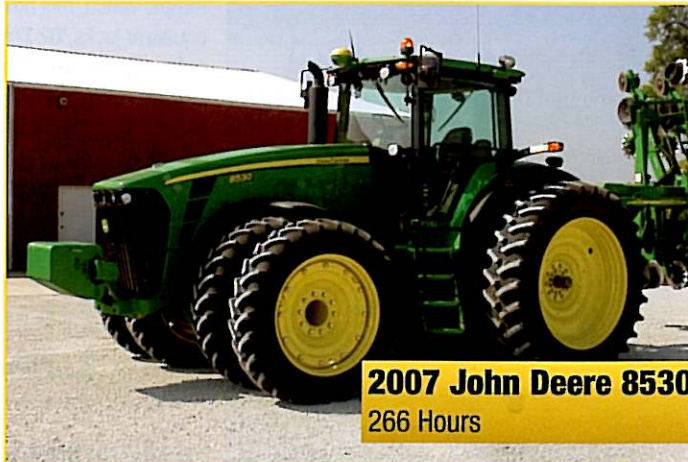
**2008 John Deere 9630**  
153 Hours



**2007 John Deere 8530**  
281 Hours



**2006 John Deere 9620**  
681 Hours



**2007 John Deere 8530**  
266 Hours



**2005 John Deere 9620**  
476 Hours



**2008 John Deere 9870 STX**  
235 Hours  
**2006 John Deere 9860 STX**  
284 Hours

## COMBINES – HEADS CARTS – WAGONS – AUGERS

'08 JD 9870 STS, Contour Master, 6.50x85Rx38 duals, 28Lx26 rear w/ 4WD, prem. cab, 5 spd. feeder house drive, 3.15" lift cyl., auto trac ready, yield monitor, ext wear round bar concaves, deep tooth chaffer, 22½" high wear unloading auger, chopper, clock heater, power heated mirrors, camera system, Intelligent Power Management for use w/ 612C stock master corn head only, AWS blower system, bin ext w/ tip ups, power fold fountain auger, 235 engine hrs., 176 sep. hrs., warranty until March 20, 2009; '06 JD 9860 STS, Contour Master, 6.20x70Rx42 duals, 28Lx26 rear w/ 4WD, heavy duty variable spd. feeder house, auto trac ready, yield monitor less display, 2.75" lift cyl., round bar concave, general purpose chaffer, touch set adjustment, 22½" reg. wear unloading auger, chopper, block heater, Xenon lights, service lights, power heated mirrors, AWS blower system, power fold auger, 284 engine hrs., 189 sep. hrs.; '08 JD 612C stalk master corn head, row sense feelers (1300 acres), warranty until August 18, 2009; 2-'06 & '05 JD 635 F 35' grain carts, AWS wind-reel system, low stone dam, Hydro-Flex platforms; 2-'05 Unverferth Road Runner HT 36' bean head carts; 1- '01 Unverferth Road Runner HT 30' corn head cart; '05 Balzer 1500, tri-axle grain cart, 30.5Lx32 rubber, 1000 PTO, camera system, tarp, scales, w/ factory extensions; '00 EZ Trail 20'x8' flat rack wagon, sides, w/ EZ Trail 1090 running gear, lights; '93 Killbros 385 gravity wagon; '00 EZ Trail gravity wagon, 50 bu. cap w/ EZ Trail 6T gear; 2-Hutchison PTO grain augers w/ hoppers (1-10"x51", 1-10"x31").

## TRUCKS – TRAILERS

'99 Kenworth T 2000 Tandem axle semi tractor, N 14-55 Cummins engine, Eaton auto trans, sleeper cab, wet kit, air ride, 11:00R 22.5 rubber, white color, w/ 65,000 one owner miles; '00 Ford F350 XLT Super Duty, power stroke, D, 4WD, service truck, ext. cab, A.T., A/C, new tires, white color, miles over; '00 Ford F350 Lariat Super Duty power stroke diesel, 4WD, short bed p-up, crew cab, A.T., A/C, white color, 50,000 one owner miles; '00 Ford Excursion XLT, 4WD, tow package, A.T., A/C, seats 9, 6.8L V10 engine, white color, 65,000 one owner miles; '01 Ford F150 Triton V-8 Lariat, 4WD, short bed crew cab p-up, A.T., A/C, white color, 93,000 one owner miles; '99 Wilson Mod DWH-400C, 41' alum hopper bottom trailer w/ Shur-lok electric tarp, one owner; '98 Ravens '39 alum frameless dump trailer w/ electric tarp, 295/75R 22.5 rubber; '98 Kiefer 25'x8' gooseneck 6T tandem axle trailer, hyd. beaver tail w/ ramps, winch, tool box, hyd jacks; '00 Hurst 25'x8' gooseneck tri-axle 5T trailer w/ beaver tail, ramps, equalizer jacks; '02 Travelong 26'x8' gooseneck tri-axle trailer w/ beaver tail & hyd. jacks; '94 STG tri-axle impl. trailer, beaver tail, ramps, ball hitch, electric jack; '84 Benson chemical trailer, mod. 40 w/ 2-1600 gal poly tanks; 2000 gal poly nurse tank trailer w/ inductor & Honda 11 hp engine; '83 home-made 12'x6' flat bed tandem axle trailer w/ solid alum ramp; 12' Snowmobile trailer; 2-2 wheel p-up bed trailers (Ford Ranger – Ford F-250) w/ electric hoist & jack; Service trailer w/ Miller 251 NT Trail Blazer welder, Ace Torch Set and portable Roll Air compressor w/ 8 hp Honda motor.

## ATV'S – SNOWMOBILE SNOW BLOWER & BLADES LAWN & MISCELLANEOUS EQUIPMENT

'04 Artic Cat 650 V-2, 4WD w/ winch, frt. & rear racks, 498 miles, 64 hrs; '01 Honda Forman Rubicon 4x4 w/ winch, 1375 miles, 163 hrs.; '98 Polaris 500 6x6 Ranger w/ electric dump bed & roll guard; '97 Artic Cat Pantera 550 EFI snowmobile; Inland DA 102, 3 pt, 540 PTO, 87" twin auger snow blower; '02 12' 3 pt snow blade; Hiniker 8' hyd. truck snow blade; Factory Cat mod. 48 electric rider sweeper, 36" width, 634 hrs.; '99 JD F620Z Trac mower w/ Kohler 20 hp. gas engine, 60" deck, 683 hrs.; Woods 6' ditch bank mower; 6' liquid 5000 lb. lawn roller; JD 717 3 pt, 7' rot. mower; Rhino 3 pt, 80" tiller; Landpride 3 pt, 6' tiller; Straw bale chopper; 3 pt, 8' harrow; JD lawn edger; Briggs 5 hp. log splitter; Jet Wire 3 pt, PTO wire roller; Kato Light 25 kw PTO generator; Honda generator; Electric Power washer; Huskee 4" hyd. sludge pump; LaForge Mount 3 pt for 8000-8010 series tractors; JD Row Track for 8000 series tractors; 3 sets of 3 – 2500 gal poly fert. tanks w/ 12 hp., 3 ph motors & plumbing – all 3 setups are located at different farms; Snyder Industrial 500 gal poly tank for ILS frt mnt 8030 series tractors; Hensley fert. Tank; 150 gal tank (fits p-up bed); 2 or 3 horse even-er hitch & neck yokes for EZ Trail 20' flat rack wagon.



## TRACTORS – PAYLOADER SKIDLOADERS – MOTOR GRADER

'08 JD 9630 8.00x70Rx38 duals, PS trans, auto trac ready, bare back, 5 SCV's, active seat, climate control, diff lock, xenon frt. & rear lights, power mirrors, buddy seat, beacon light, 8000 lb wt package, 153 hrs., warranty until Oct. 11, 2009; '06 JD 9620 8.00x70R 38 duals, PS trans, auto trac ready, PTO, 5 SVC's, active seat, climate control, diff lock, xenon frt. & rear lights, power mirrors, buddy seat, beacon light, 8000 lb wt pkg. 681 hrs.; '05 JD 9620 8.00 x 70R 38 duals, PS trans, auto trac ready, 3 pt, 5 SCV's, active seat, climate control, diff lock, xenon frt. lights, power right hand mirrors, buddy seat, 8000 lb wt pkg., 476 hrs.; (2) '07 JD 8530's 4.80x80R 50 duals, 3.80x80R 38 frt. duals w/ ILS, IVT trans, auto trac ready, Cat. 4N 3pt w/ quick hitch, 1000 PTO, 5 SCV's, 60 GPM pump, active seat, climate control, xenon frt. & rear lights, power mirrors, buddy seat, 2-1400 lb rear wts, 16 frt. wts, frt. fenders, radar, cold start pkg, foot throttle, rear fender ext., Cat. 4 drawbar, beacon light, one at 266 hrs. w/ warranty until Oct 10, 2009 and one at 281 hrs. w/ warranty until Jan. 9, 2009; '77 IH 1086 cab, air, 18.4x38 rubber, frt. wts, 4756 hrs. '94 JD 955 4 WD w/ mat'l bucket loader, roll guard, 36x13.5-15" turf tires, 625 hrs.; '00 JD 4700 AWD, hydro, 3 pt w/ quick hitch, frt. wts, 2 frt. hyd. valves, 1 rear, 13.6x28 rubber, 282 hrs.; '00 JD 5510N FWD, D, CAH, snyc. reverser, frt. 3 pt LaForge hitch, rear 3 pt w/ quick hitch, 16.9x24 rubber, w/ R.A.D. frt. mnt 3 pt hyd. driven snow blower (this unit will sell together), 227 hrs.; '02 Kubota R520 4 WD, D, payloader, cab w/ heater, w/ grapple bucket, 504 hrs.; '96 Takeuchi TL 26, D, skidsteer, tracks, cab, mat'l bucket, joy stick control, aux hyd., 965 hrs.; '99 Case 1825 B, D, skidsteer, cab, aux hyd., mat'l bucket, 234 hrs.; '99 Gehl 6635 SXT, D, skidsteer, cab, mat'l bucket, high flow aux hyd., 467 hrs.; '03 Bobcat A300, D, skidsteer, 2 spd, all wheel steer, CAH, aux hyd., 520 hrs.; '01 Leeboy 685 road grader, Cummins diesel, hydro, CAH, dual laser alignment, 10' blade, ripper teeth, 205 hrs.; Skidloader jack hammer; Bobcat LT 303 trencher; Bobcat 72" sweeper; Bobcat Brushcat 60" mower; Skidloader bale spear; 2-Loftness Kwik-Pik stone pickers.

## SPRAYER – ROCK PICKER IMPLEMENTS

'04 Miller Nitro 2275 H T sprayer, 1400 gal SS tank, 90' 5 section boom, Accu boom, Norac UC 4 total control, AG leader auto steer, CBTA Raven injector system, full light pkg., 3.80/90 R 46 rubber, 902 hrs.; 4-600/65R 38 tires & rims to be sold separate; '03 Kongskilde Stonebear mod. 7100 rock picker, PTO 16' width; '08 JD 1770 NT 24 RN planter, CCS w/ refuge plus, Seed Star Gen 2, hyd. drive w/ display, vacuum, Proshaft drive, rubber closing wheels, vac. sensor, fert. pressure sensor, pneumatic down pressure, steel scrapers, reg parallel arms, 300 gal fert. tank, single disc fert. openers, rock guards, Pro Max 40 seed discs, markers, GF2 rate controller w/ Tru count air clutches (12 sections), fill lights, 11x22.5 tire pkg., planted 1300 acres, warranty remaining; '08 JD 1790 16/32 planter, CCS w/ refuge plus, indep. markers, Seed Star Gen 2, hydro drive w/ display, cast iron closing wheels, no till coulters, vac, pneumatic down pressure, tire & rock guards, soybean disc, fill lights, planted 1400 acres, warranty remaining; '06 Oxbow New Leader G-4 lime spreader, mod. low pac, SP-6 console, PTO, 18' SS box, 4-8.00/45-26.5 rubber; 2- AG-System mod. 6200, 12R nitrogen applicators w/ 1000 gal poly tanks; '00 Kverneland DA-100 12 spring bottom plow w/ on-land hitch, 12"-22" cut; '03 Krause mod. 7400-41 NR, 41' rock flex wing tandem disc harrow w/ 22" blades; '08 JD 2310 45' mulch finisher, warranty remaining; '05 Sunflower mod. 4232-23 C-Flex disc chisel; '03 Krause mod. 4821F 21 shank disc chisel; 2-Brillion 21', 8 spring shank, 8 spring coulter, hyd. fold 3 pt rippers w/ custom shop built frames; '00 Krause 32' X-fold solid packer w/ 24" packer wheels; '93 JD 430 30' flat fold rot. hoe (completely rebuilt); JD 1100 21', 3 pt field cultivator w/ busterbar & Unverferth rolling basket; DMI 26' single crumbler; Wilrich 26' field cultivator w/ rear hitch & 5 bar flex harrow; 2-Gehl 309 side discharge manure spreaders, high sides, 540 PTO; '06 Frontier mod. MS 1108 PTO manure spreader.

## GPS SYSTEMS

(2) JD RTK base stations; (3) JD GS2 Auto Trac RTK systems; JD Original Green Star Auto Trac RTK system; (2) JD Original Green Star Auto Trac SF2 systems. For Additional information contact Matt Gilsinger at 574-806-0183.





**Ball Auction & Realty, Inc.**

302 E Center St.  
Bourbon, IN 46504

# IRENE CORP AUCTION

**Friday January 2, 2009**

**10:00 AM EST**

**Nappanee, Indiana**

**Location:**

**8566W 1050N, Nappanee, IN.**

3½ miles south of Nappanee, IN on SR 19 to 1050N,  
then west ½ mile to auction.



Regardless of weather entire auction  
will be held in heated building pictured above.



**Ball Auction & Realty, Inc.**  
**574-342-8299**  
**www.ballrealtygroup.com**

**Auctioneers:**

Daryl Ball • Mike Berger • Larry Wattenbarger

## INSPECTION DATES & LOCATION:

**Saturday Dec. 27, 2008 8AM-5PM**

**Thursday Jan. 1, 2009 8AM-12NOON**

Inspection site is located approximately 1 mile west of auction site up long lane  
(watch for signs)

## TERMS:

Cash or personal check with proper I.D. Out of state checks must be accompanied  
by a bank guaranteed letter of credit to Ball Auction & Realty.

Announcements made day of auction take precedent over printed material.

Food and restrooms will be available.

## Irene Corporation, Owner

Note: Information on late model equipment with warranties  
contact Matt Gilsinger @ 574-806-0183

Information on balance of equipment  
contact Ron Cripe, shop supervisor @ 574-356-6065

